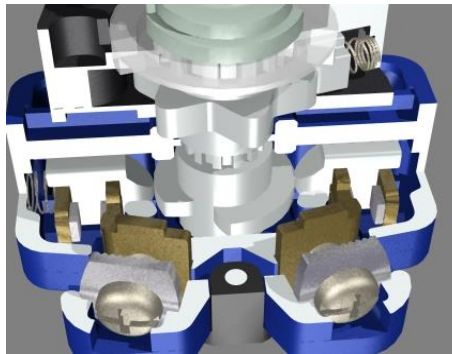


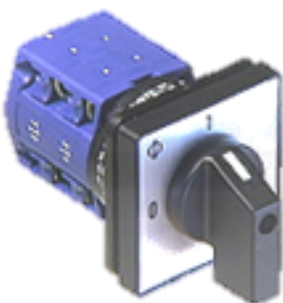
- Type of switches
- **ROTARY SWITCH (Control & Load switches 10A – 2400A)**
 - **LOADBREAK SWITCH (KG Main Switches 16A – 1250A)**

1) ROTARY SWITCH



Type CA

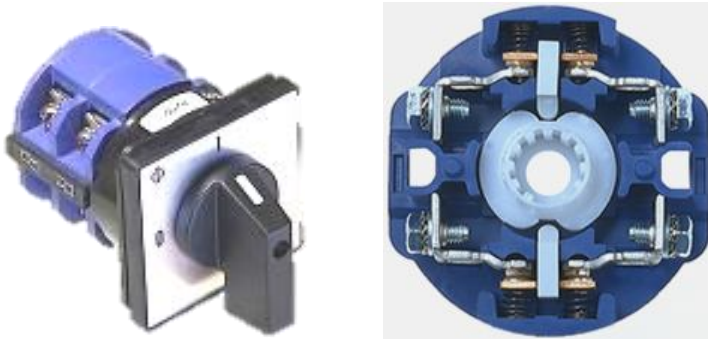
- 6A – 63A
- IP20 Finger-proof terminals for safety according to VDE0106
- Wide range of applications
- Terminals accessible from the side
- Low-voltage applications
- Resilient to aggressive environments
- Up to 24 contacts (2 contact per stage)
- Multi-step switches with up to 12 steps
- +/- screws with screwdriver guide



Type CG

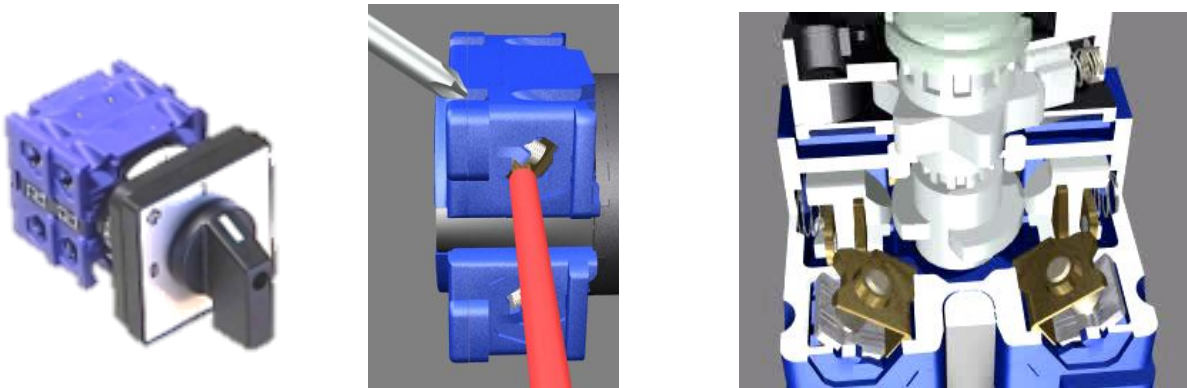
- 10A – 20A
- IP20 Finger-proof terminals for safety according to VDE0106
- Smallest cam switch in the world
- Max. 2 contacts/stage
- AC3/AC4 rated

- Switching angle 30°, 45°, 60° & 90°
- Std Silver Oxide double break contacts
- Special gold & H-bridge contacts available
- Rear terminal access allows easy wiring
- Specially suitable for control selector switch up to 12 switching position
- Application for control and instrument application



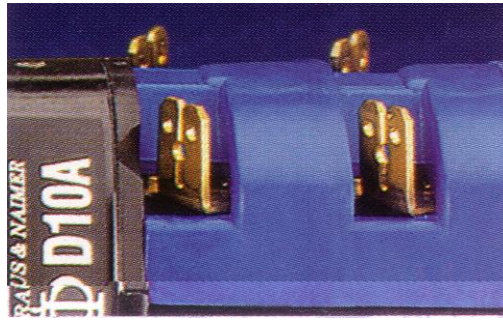
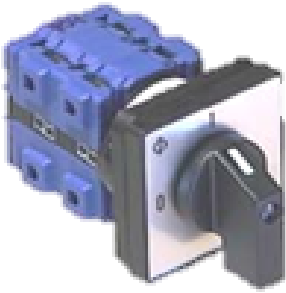
Type C

- 32A – 200A
- Max. 2 contacts/stage
- Stages-Melamine material for heavy duty/high temperature applications
- Motor rated AC3/AC4
- Switching angle 20°, 30°, 45°, 60° & 90°
- Application - Power switching for:
 - ✓ Isolators
 - ✓ Change-over
 - ✓ Multi-steps



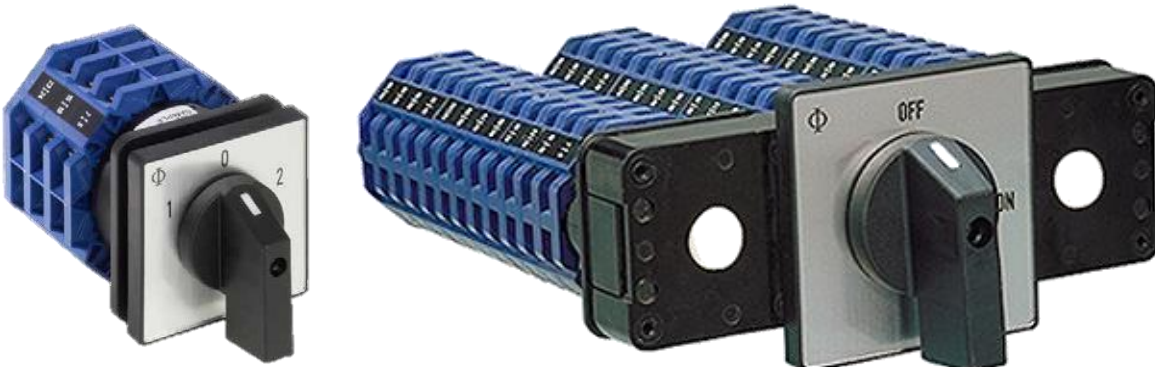
Type CH

- 20A – 25A
- IP20 Finger-proof terminals for safety according to VDE0106
- Offset terminals, accessible from the rear (even with the switch installed)
- Regular (CH) or ring-type terminals (CHR) with captive screws
- Quick-connect (AMP) terminals (CHR)
- Low-voltage applications
- Resilient to aggressive environments
- +/- screws with screwdriver guide



Type DH/DK

- 5A – 16A
- IP20 Finger-proof terminals for safety according to VDE0106
- Max. 2 contacts/stage
- Switching angle 30°, 45°(except Type DK), 60° & 90°
- Std Silver Oxide double break contacts
- Available gold & silver H-bridge contacts
- Type DH/DHR allows turning & push-in operation of handle
- Wide range of applications particularly in the field of very low power, i. e. calibration-, control- and semiconductor circuitry.
- Fully enclosed stages with optional gold contacts and self-cleaning H-bridge design with a cross-wire contact system.
- High switching reliability, even in chemically aggressive, dusty or otherwise polluted environments.



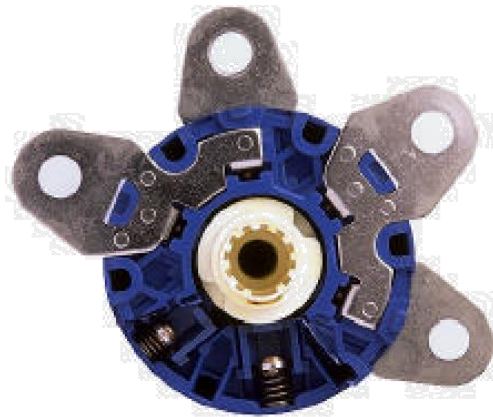
Type A

- 20A – 25A
- Multi-steps up to 36 positions
- Compact 4 contacts per stage
- Maximum 48 contacts per column
- Maximum of 144 contacts per switch (3 columns)
- Gold contacts available for corrosive environment
- Application - Multi steps switching.



Type L

- 350A – 2400A
- High current Rating switch for use as
 - ✓ Isolators
 - ✓ Change-over
 - ✓ Multi-steps
- For resistive or low inductive loads
- By connecting in parallel, the current rating of the switch for resistive/low inductive load, on-load switching of OFF-load switching can be increase
- Limited AC3 rated
- C125-6 = L350, L630, L1000, L1250 in parallel
- C315 = L400, L600, L800, L1200 & L2000 in parallel
- Used mostly in distribution panel



Type X

- 200A – 600A
- Highly compact switch 6 contacts/stage
- Max. 36 contacts
- Switching angle 30°, 45°, 60° & 90°
- Max. 18 switching positions
- Application: Load tapping, heater bank, gang switching of transformer
- Most switches suffer from vastly increased physical length when high power capability is to be combined with complicated switching programs.
- Cam-switches of the X-Series feature six contacts in each stage thus allowing very compact solutions for confined environments, e. g. for multi-step applications

2) LOADBREAK SWITCH

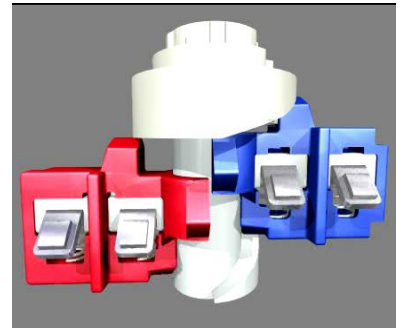
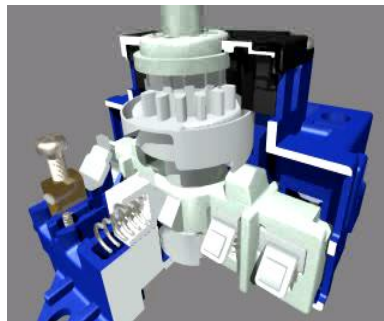
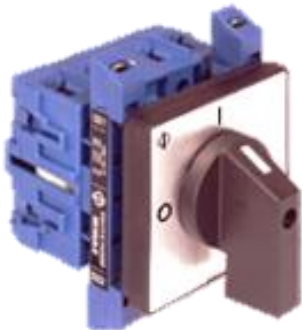
Safety

- IP20 Finger-proof terminals for safety according to VDE0106
- Wide isolation Distance of 13 to 14mm distance between open contacts provide Extra Safety exceeding even the stringent requirements of Swedish Standards SS428065
- Built-in screw rigger guides prevent slipping of screw driver during installation



Type KG

- 20A – 315A
- Main Switch
- Isolators
- Safety Switch
- Disconnectors Switch
- Couplers
- Change-over Switch



Type KH/KHR

- 16A – 80A
- Ring-type terminals can be connected without removing the screws
- Shaft can be extended through the switch body
- Comply with disconnecter isolation requirements up to 690V
- Forced contact movement during making and breaking
- Wide range of auxiliary contact options
- 2 pole double-throw switch available
- Individual curves optimized for making and breaking



Type KF

- 16A – 32A
- Compact (very shallow design)
- Up to 1000V insulation voltage according to IEC possible
- Design allows a big variation of terminals marking
- Removal from DIN rail can be done without tool change